



Cadu Series

User Manual

UPCMTLS665TCAAZ01B
UPCMTLS685TCAAZ01B
UPCMTLS610HCAAZ01B
UPCMTLS615HCAAZ01B
UPCMTLS620HCAAZ01B

Manual de utilizare



627.10.23.0

Before using this product, carefully read all product documentation and retain it for future reference.

Thank you for purchasing our products!

Please read this manual before using the product.

nJoy is a brand of power and backup protection products that create solutions for multiple levels of environment complexity, residential to industrial

This UPS will protect your electronic equipment from physical damage and will provide emergency battery backup power to prevent data loss in the event of power problems.

The following models belong to the **Cadu Series UPS**:

600 VA

Cadu 650

800 VA

Cadu 850

1000 VA

Cadu 1000

1500 VA

Cadu 1500

2000 VA

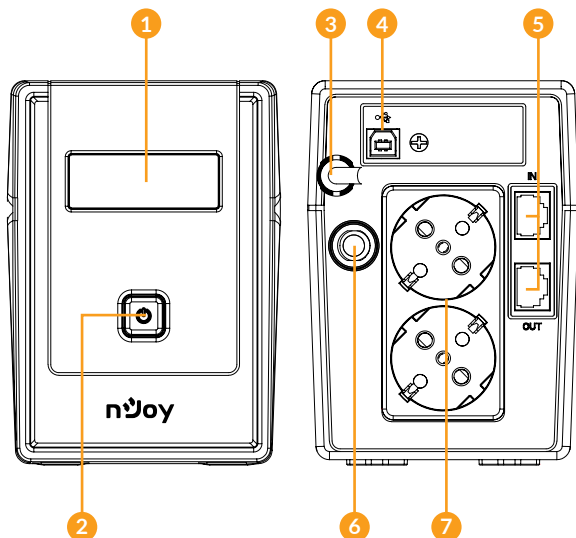
Cadu 2000

1 Package contents

- ✓ UPS unit
- ✓ Power cord
- ✓ USB cable
- ✓ User manual
- ✓ Warranty card

2 Product overview

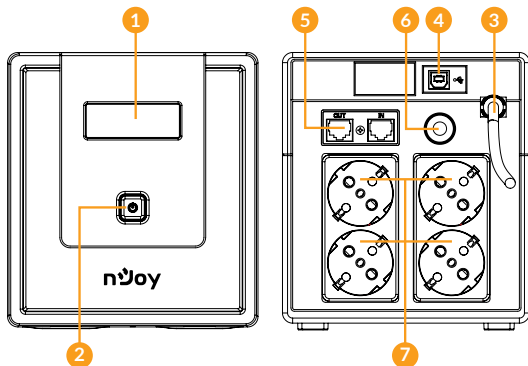
Cadu 650/850 - Front view / Back view



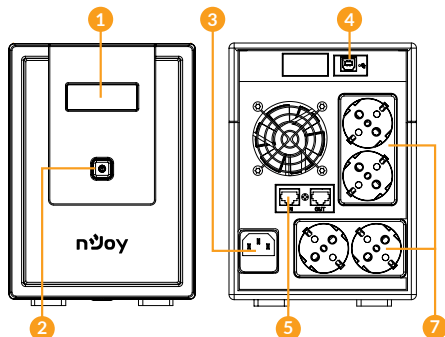
NOTE!

Before installation, please inspect the unit. Be sure that nothing inside the package is damaged. Keep the original package in a safe place for future use.

🔍 Cadu 1000 - Front view / Back view



🔍 Cadu 1500/2000 - Front view / Back view



- 1. LCD display:** Indicate status information, settings and events. It auto-dims to 20% brightness after 20 seconds in normal conditions. It brightens up when power button is shortly pressed or when abnormal condition occurs (Battery mode, Fault & Alarm).

2. **Power on/off button:** Short press Power button for LCD brighten, long press Power button to turn the UPS ON or OFF. Shortly double press this button to mute all alarms. To reactivate the alarms repeat the action. *(feature implemented only after April 2023).*
3. **Input power cord:** Connect to utility power.
4. **HID USB port:** Allows the UPS to appear in Windows like a battery icon. When the power is out, you can still see the battery level and adjust its settings. Also Windows power management options are available. In case you need more advanced local management we recommend you to install and use "ViewPower" software.
5. **1Gb/s Network, Modem or Phone surge protection**
6. **Input circuit breaker:** This provides optimal overload protection.
7. **AC outlet:** The UPS provides outlets for connected equipment to insure temporary uninterrupted operation during a power failure and against surges and spikes.

3 Important safety warnings

Please comply with all warnings and operating instructions in this manual strictly. Save this manual properly and carefully read the following instructions before installing the unit. Do not operate this unit before reading through all safety information and operating instructions carefully:

Transportation

- Please transport the UPS system only in the original package to protect against shock and impact.

Preparation

- Condensation may occur if the UPS system is moved directly from cold to warm environment. The UPS system must be absolutely dry before being installed. Please allow at least two hours for the UPS system to acclimate to the environment.
- Do not install the UPS system near water or in moist environments.
- Do not install the UPS system where it would be exposed to direct sunlight or near heat sources.
- Do not block ventilation holes in the UPS housing.

Installation

- Do not connect appliances or devices which would overload the UPS system (e.g. laser printers) to the UPS output sockets.
- Place cables in such a way that no one can step on or trip over them.
- Do not connect domestic appliances such as hair dryers to UPS output sockets.
- The UPS can be operated by any individuals with no previous experience.
- Connect the UPS system only to an earthed shockproof outlet which must be easily accessible and close to the UPS system.
- Please use only VDE-tested, CE-marked mains cable (e.g. the mains cable of your computer) to connect the UPS system to the building wiring outlet (shockproof outlet).
- Please use only VDE-tested, CE-marked power cables to connect the loads to the UPS system.
- When installing the equipment, it should ensure that the sum of the leakage current of the UPS and the connected devices does not exceed 3.5mA.

Operation

- Do not disconnect the mains cable on the UPS system or the building wiring outlet (shockproof socket outlet) during operations since this would cancel the protective earthing of the UPS system and of all connected loads.
- The UPS system features its own, internal current source (batteries). The UPS output sockets or output terminals block may be electrically live even if the UPS system is not connected to the building wiring outlet.
- In order to fully disconnect the UPS system, first press the OFF/Enter button to disconnect the mains.
- Prevent fluids or other foreign objects from entering the inside of the UPS system.
- **WARNING:** This is a category C2 UPS product. In a residential environment, this product may cause radio interference, in which case the user may be required to take additional measures.

Maintenance, service and faults

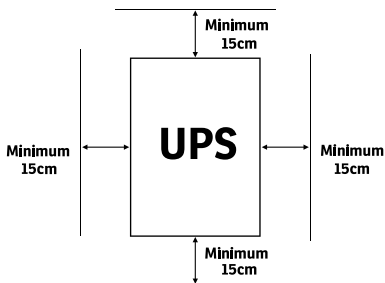
- The UPS system operates with hazardous voltages. Repairs may be carried out only by qualified maintenance personnel.
- Caution - risk of electric shock. Even after the unit is disconnected from the mains (building wiring outlet), components inside the UPS system are still connected to the battery and electrically live and dangerous.
- Before carrying out any kind of service and/or maintenance, disconnect the batteries and verify that no current is present and no hazardous voltage exists in the terminals of high capability capacitor such as BUS-capacitors.
- Only persons are adequately familiar with batteries and with the required precautionary measures may replace batteries and supervise operations. Unauthorized persons must be kept well away from the batteries.
- Caution - risk of electric shock. The battery circuit is not isolated from the input voltage. Hazardous voltages may occur between the battery terminals and the ground. Before touching, please verify that no voltage is present!
- Batteries may cause electric shock and have a high short-circuit current. Please take the precautionary measures specified in this manual and any other measures necessary when working with batteries: remove wristwatches, rings and other metal objects, use only tools with insulated grips and handles.
- When changing batteries, install the same number and same type of batteries.
- Do not attempt to dispose of batteries by burning them. This could cause battery explosion.
- Do not open or destroy batteries. Escaping electrolyte can cause injury to the skin and eyes. It may be toxic.
- Please replace the fuse only with the same type and amperage in order to avoid fire hazards.
- Do not dismantle the UPS system.

4 Installing your UPS system

4.1 Hardware installation guide

1. Placement & Storage conditions

Install the UPS in a protected area that is free of excessive dust and has adequate air flow. Please place the UPS away from other units at least 15 cm to avoid interference. Do NOT operate the UPS where the temperature and humidity is outside the specific limits. (Please check the specs for the limitations.)



2. Connect to utility and charging

Plug in the AC input cord to the wall outlet. For the best results, suggest to charge the battery at least 6 hours before initial use. The unit charges its battery while connecting to the utility.

3. Connect the loads

Plug in the loads to output receptacles on the rear panel of the UPS. Simply turn on the power switch of UPS unit, then devices connected to the UPS will be protected by UPS unit.

⚠ CAUTION



Do **NOT** plug **LASER PRINTERS** into any of the outlets.



Do **NOT** plug any **SURGE STRIPS** into any of the outlets.

4. Connect communication cable

To allow for unattended UPS shutdown/start up and status monitoring, connect the communication cable one end to the USB port and the other to the communication port of your PC. With the monitoring software installed, you can schedule UPS shutdown/start up and monitor UPS status through PC.

5. Connect Modem/Phone /Network for surge protection

Connect a single modem/phone line into surge protected "IN" outlet on the back panel of the UPS unit. Connect from "OUT" outlet to the computer with phone line cable.

6. Turn On/Off the unit

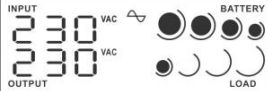
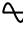
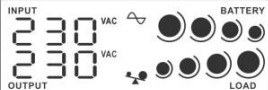




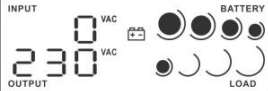

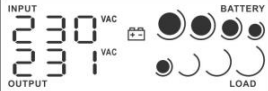
Turn on the UPS unit by pressing the power switch. Turn off the UPS unit by pressing again the power switch.

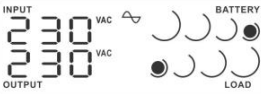
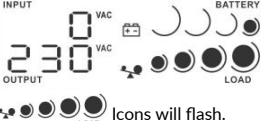

4.2 Software installation guide

Install software: For optimal computer system protection, install the UPS monitoring software from <https://www.power-software-download.com/viewpower.html> to fully manage the UPS.

5 LCD display indicators

UPS Mode	LCD display	Description
UPS Power on		When UPS is powered on, it will enter this mode for few seconds.
Standby Mode		In standby mode, no output power is available.

<p>AC Mode</p>	 <p>When AVR is functioning,  icon will flash every second.</p>	<p>When the input voltage is within acceptable range, UPS will provide stable AC power to output. The UPS will also charge the batteries in AC mode.</p>
<p>Overload in AC mode</p>	 <p>    Icons will flash.</p>	<p>When overload occurs, alarm will beep every 0.5 second.</p>
<p>Battery Mode</p>	 <p>When battery level is low,  icon will flash every second .</p>	<p>Alarm will beep every 10 seconds.</p>
<p>Self-Test Mode</p>		<p>This function is only activated via software for the model with communication port.</p>

<p>Battery replacement alarm</p>		<p>Alarm will beep every 2 seconds. Only available for the model with communication function.</p>
<p>Overload in battery mode</p>	 <p>Icons will flash.</p>	<p>When overload occurs, alarm will beep every 0.5 second.</p>
<p>Fault mode</p>		<p>A fault occurs in the UPS. Alarm will continue beeping.</p>

6 Troubleshooting

Problem	Possible cause	Solutions
No LCD display on the front panel.	Low battery.	Charge the UPS at least 6 hours.
	Battery fault.	Replace the battery with the same type of battery.
	The UPS is not turned on.	Press the power switch again to turn on the UPS.
Alarm continuously sounds when the mains is normal.	The UPS is overload.	Remove some loads first. Before reconnecting equipment, please verify that the load matches the UPS capability specified in the specs.
When power fails, back up time is shorten.	The UPS is overload.	Remove some critical load.
	Battery voltage is too low.	Charge the UPS at least 6 hours.
	Battery defect. It might be due to high temperature operation environment, or improper operation to battery.	Replace the battery with the same type of battery.
The mains is normal, but the unit is on battery mode.	Power cord is loose.	Reconnect the power cord properly.

NOTE!

If any abnormal situations occur that are not listed above, please call for service immediately.



Disposal of Old Electrical & Electronic Equipment

(Applicable in the European Union and other European countries with separate collection systems)

This symbol on the product or on its packaging indicates that this product shall not be treated as household waste.

Instead it shall be handed over to the applicable collection point for the recycling of electrical and electronic equipment.

By ensuring this product is disposed of correctly, you will help prevent potential negative consequences for the environment and human health, which could otherwise be caused by inappropriate waste handling of this product.

The recycling of materials will help to conserve natural resources.

Mulumim pentru ca ati ales produsele noastre!

Va rugam cititi cu atentie manualul de utilizare inainte de a pune in functiune acest produs.

nJoy este un brand de solutii UPS dedicate protectiei si rezervei de energie din diferite medii de utilizare, de la rezidential la industrial.

UPS-ul va protejeaza echipamentele electronice de daune fizice si ofera o baterie de rezerva pentru a preveni pierderile de date in cazul intreruperilor accidentale ale energiei electrice.

Din seria **Cadu** fac parte urmatoarele modele:

600 VA

Cadu 650

800 VA

Cadu 850

1000 VA

Cadu 1000

1500 VA

Cadu 1500

2000 VA

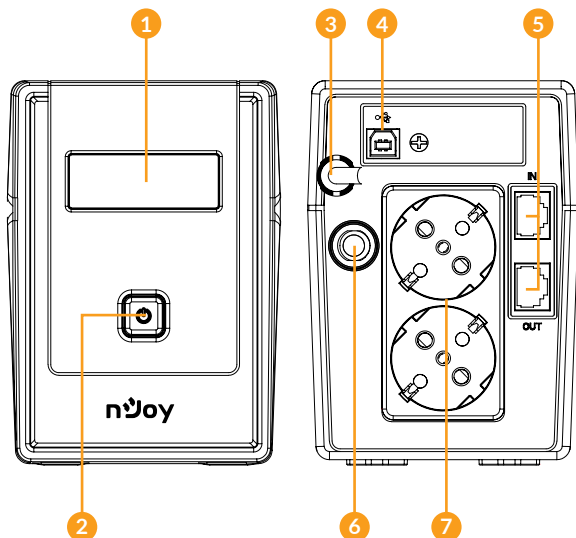
Cadu 2000

1 Continutul pachetului

- ✓ Unitatea UPS
- ✓ Cablu de alimentare
- ✓ Cablu USB
- ✓ Manual de utilizare
- ✓ Certificat de garantie

2 Prezentarea produsului

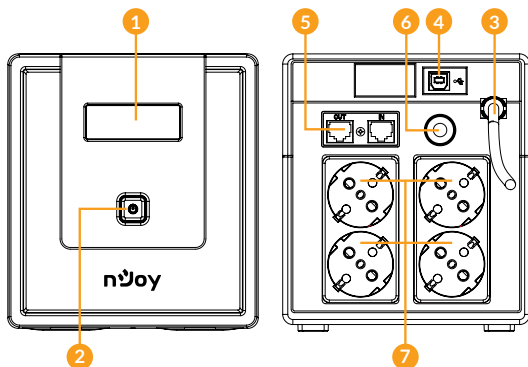
📍 *Cadu 650/850 - Vedere din fata / Vedere din spate*



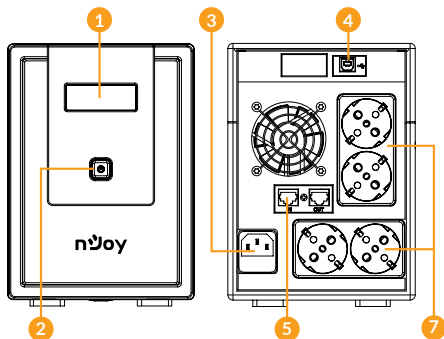
NOTA!

Inainte de instalare inspectati unitatea. Fiti siguri ca nimic din interiorul pachetului nu este stricat. Tineti pachetul original intr-un loc sigur pentru o utilizare ulterioara.

🔍 Cadu 1000 - Vedere din fata / Vedere din spate



🔍 Cadu 1500/2000 - Vedere din fata / Vedere din spate



1. **Afisaaj LCD:** Indica informatii despre stare, setari si evenimente. Reduce automat luminozitatea la 20% dupa 20 de secunde in conditii normale de functionare. Se lumineaza atunci cand butonul de alimentare este apasat scurt sau cand apare un eveniment (functionare pe mod baterie sau avarie).

- 2. Buton oprit/pornit:** Apasati scurt acest buton pentru a activa ecranul LCD, apasati lung butonul pentru a porni sau opri UPS-ul. Apasati scurt, de 2 ori consecutiv acest buton pentru a dezactiva toate alarmele. Pentru a reactiva alarmele sonore, repetati actiunea. *(Aceasta optiune este valabila pentru modelele produse incepand cu aprilie 2023).*
- 3. Cablu de alimentare:** Conectati-l la retea.
- 4. Port HID USB:** Permite UPS-ului sa apara in Windows ca o baterie. In momentul intreruperii curentului ai optiunea de a vedea nivelul bateriei, care este incarcarea plus alti parametrii. Se pot folosi optiunile din Windows legate de controlul bateriei. Pentru optiuni extinse se recomanda instalarea software-ului ViewPower.
- 5. Protectie linia de modem/telefon si retea de pana la 1Gb/s.**
- 6. Siguranta pentru curentul de intrare:** Siguranta protejeaza in caz de supraincarcare.
- 7. Prize AC:** UPS-ul are prize pentru conectarea echipamentelor pentru a asigura functionarea temporara a acestora in cazul unei caderi sau variatii de tensiune.

3 Avertizari de siguranta

Va rugam sa respectati toate avertismentele si instructiunile de utilizare din acest manual. Pastrati acest manual in mod corespunzator si cititi cu atentie urmatoarele instructiuni inainte de instalarea aparatului. Nu folositi aceasta unitate inainte de a citi toate instructiunile de siguranta si de utilizare cu atentie:

Transport

- Va rugam sa transportati sistemul UPS numai in ambalajul original pentru a-l proteja impotriva socurilor.

Pregatire

- Condensul poate aparea daca sistemul UPS este mutat dintr-un mediu rece in unul cald. Sistemul UPS trebuie sa fie uscat inainte de a fi instalat. Va rugam sa alocati cel putin doua ore pentru ca sistemul UPS sa se aclimatizeze cu mediul unde doriti sa il instalati.
- Nu instalati sistemul UPS langa apa sau in medii umede.

- Nu instalati sistemul UPS acolo unde ar fi expus la lumina directa a soarelui sau in apropierea surselor de incalzire.
- Nu blocati orificiile de ventilatie ale carcasei UPS-ului.

Instalare

- Nu conectati aparate sau dispozitive care ar suprasolicita sistemul UPS (de exemplu: imprimantele laser) la mufele de iesire UPS.
- Instalati cablurile in asa fel incat nimeni sa nu calce pe ele.
- Nu conectati aparate de uz casnic, cum ar fi uscatoare de par la prizele de iesire UPS.
- UPS-ul poate fi folosit de orice persoana, fara a necesita nici o experienta anterioara.
- Conectati sistemul UPS numai la o priza cu impamantare, care trebuie sa fie usor accesibila si aproape de sistemul UPS.
- Va rugam sa folositi numai cabluri de alimentare testate VDE si cu marcaj CE (de exemplu: cablul de alimentare de la computer) pentru a conecta sistemul UPS.
- La instalarea echipamentului, trebuie sa va asigurati ca totalul curentului de scurgere al UPS si al dispozitivelor conectate nu depaseste 3,5 mA.

Operare

- Nu deconectati cablul de alimentare de la sistemul UPS sau de la priza cladirii in timpul utilizarii, deoarece acest lucru ar anula impamantarea de protectie a sistemului UPS si a tuturor sarcinilor conectate.
- Sistemul UPS are propria sursa de curent intern (baterii). Prizele de iesire sau terminale de iesire pe categorii pot fi incarcate electric, chiar daca sistemul UPS nu este conectat la sistemul electric al cladirii.
- Pentru a deconecta complet sistemul UPS, apasati mai intai butonul OFF/Enter pentru a deconecta sursa de alimentare.
- Nu lasati sa ajunga in interiorul unitatii UPS orice obiect strain sau lichide.
- **ATENTIE:** Acesta este un produs UPS de clasa C2. In mediul casnic, acest produs poate cauza interferente radio, caz cand poate fi necesar sa se ia masuri suplimentare.

Intretinere, service si defecte

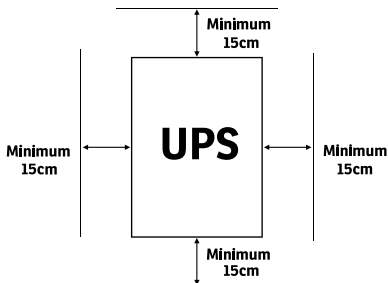
- Sistemul UPS functioneaza cu tensiuni periculoase. Reparatiiile pot fi efectuate numai de catre personalul de intretinere calificat.
- Atentie - risc de soc electric. Chiar si dupa ce aparatul este deconectat de la reseaua electrica, componentele din interiorul sistemului UPS sunt inca conectate la baterie si sunt incarcate electric si periculoase.
- Inainte de a efectua orice fel de service si / sau intretinere, deconectati bateriile si verificati sa nu existe curent sau tensiune periculoasa in terminalele condensatorului de mare capacitate, cum ar fi condensatorul BUS.
- Numai persoanele care sunt familiarizate in mod adecvat cu baterii si cu masurile de precautie necesare pot inlocui bateriile si supraveghea operatiunile. Persoane neautorizate trebuie sa fie tinute departe de baterii sistemului UPS.
- Atentie - risc de soc electric. Circuitul bateriei nu este izolat de tensiunea de intrare. Tensiuni periculoase pot aparea intre bornele bateriei si pamant. Inainte de a atinge, va rugam sa verificati ca nu exista tensiune!
- Bateriile pot provoca soc electric. Va rugam sa luati masurile de precautie specificate mai jos, precum si orice alte masuri necesare atunci cand se lucreaza cu bateriile sistemului: dati-va jos ceasurile de mana, inelele si alte obiecte metalice si folositi doar instrumente cu manere izolate.
- La schimbarea bateriilor, instalati acelasi numar si acelasi tip de baterii.
- Nu incercati sa distrugeti bateriile prin arderea lor. Acest lucru poate cauza explozia bateriilor.
- Nu deschideti sau distrugeti bateriile. Scurgerea electrolitilor poate provoca leziuni la nivelul pielii si ochilor si poate fi toxic.
- Va rugam sa inlocuiti siguranta numai cu acelasi tip de siguranta si amperaj pentru a evita pericolele de incendiu.
- Nu dezasamblati sistemul UPS.

4 Instalarea sistemului de UPS

4.1 Ghid de instalare Hardware

1. Conditii de depozitare

Instalati UPS-ul intr-o zona lipsita de praf si aerisita. Va rugam asezati UPS-ul la cel puțin 15 de cm de alte echipamente pentru a evita orice fel de interferente. Nu puneti in functiune UPS-ul in conditii de umiditate si temperatura ridicate (Consultati specificatiile pentru limitari).



2. Conectarea la retea si incarcarea

Conectati cablul de alimentare la priza din perete. Pentru o functionare fara cusur, incarcati bateriile pentru cel puțin 6 ore inainte de prima utilizare. UPS-ul se incarca automat cat este conectat la retea.

3. Conectati echipamentele

Conectati echipamentele la prizele UPS-ului de pe panoul din spate. Porniti UPS-ul de la butonul de ON, iar echipamentele conectate vor fi protejate.

⚠ ATENTIE



NU conectati imprimante laser la nici una din prizele UPS-ului.



NU conectati alte ACCESORII CU PROTECTIE la niciuna din prize.

4. Conectare pentru cablul de comunicare USB

Pentru a permite inchiderea si pornirea fara asistenta a UPS-ului plus monitorizarea lui, conectati cablul de comunicare la portul USB si la PC. Cu programul de monitorizare instalat se poate verifica oricand statusul UPS-ului si programarea lui.

5. Conectare modem/linie de telefon pentru protectie

Conectati o singura linie de telefon/conexiune internet pe care o doriti protejata in priza IN de pe spatele UPS-ului, apoi de la priza OUT conectati cablul la computer.

6. Opriti/porniti UPS-ul

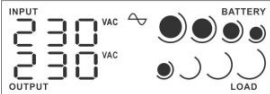
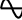
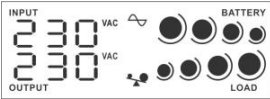
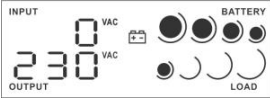

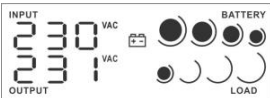
Porniti UPS-ul apasand butonul de pornire, iar pentru a-l stinge apasati acelasi buton.

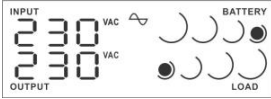
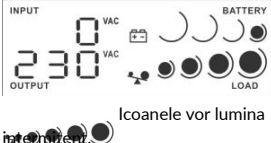

4.2 Ghid de instalare Software

Instalati programul de management: pentru o configurare completa a UPS-ului este recomandata instalarea programului de management de la urmatorul link <https://www.power-software-download.com/viewpower.html>

5 Afisare ecran LCD

Mod UPS	Afisaj LCD	Descriere
UPS pornit		Cand UPS-ul porneste va intra in aceasta stare pentru cateva secunde.
Mod In Asteptare		In acest mod nu exista tensiune la prizele UPS-ului.

<p>Mod AC</p>	 <p>Cand AVR-ul functioneaza, icoana  va lumina intermitent.</p>	<p>Cand tensiunea de intrare este in limite acceptabile UPS-ul va oferi tensiune, in plaja de lucru, la prizele de iesire. UPS-ul incarca bateriile in acest mod.</p>
<p>Supra- incarcare in mod AC</p>	 <p>Icoanele vor lumina intermitent.</p>	<p>Cand apare supraincarea alarma va suna la fiecare 0.5 secunde.</p>
<p>Mod Baterie</p>	 <p>Cand bateria e slaba, icoana  va lumina intermitent.</p>	<p>Alarma va suna la fiecare 10 secunde.</p>
<p>Mod Auto- Test</p>		<p>Aceasta functie este activata doar prin intermediul programului pentru modelul cu port de comunicare.</p>

<p>Avertisment schimbare baterii</p>		<p>Alarma va suna la fiecare 2 secunde. Aceasta functie este disponibila doar pentru modelul cu functie de comunicare.</p>
<p>Supra- incarcare in mod baterie</p>	 <p>Icoanele vor lumina intermitent.</p>	<p>Cand apare supraincarcarea alarma va suna la fiecare 0.5 secunde.</p>
<p>Mod Eroare</p>		<p>Cand apare o eroare UPS-ul va suna intermitent.</p>

6 Probleme si solutii

Problema	Posibila cauza	Solutii
Nicio informatie pe ecranul LCD.	Baterie slaba.	Incarca UPS-ul cel putin 6 ore.
	Eroare la baterie.	Inlocuieste bateriile cu unele de acelasi fel.
	UPS-ul nu este pornit.	Apasa butonul de pornire.
Alarma suna continuu cand tensiunea la priza e normala.	UPS-ul este supraincarcat.	Deconectati o parte din echipamente de la prizele UPS-ului. Asigurati-va ca incarcarea nu depaseste valoarea acceptata de UPS.
UPS-ul nu mai e alimentat de la priza, perioada de back-up este mai scurta.	UPS-ul este supraincarcat.	Deconecteaza din echipamente.
	Voltajul bateriilor este prea mic.	Incarca UPS-ul cel putin 6 ore.
	Defect la baterie datorata temperaturilor ambientale ridicate sau bateriile nu functioneaza corect.	Inlocuieste bateriile cu unele de acelasi fel.
Tensiunea de incarcare e normala dar UPS-ul e in modul Baterie.	Cablul de alimentare nu e conectat corect.	Conecteaza cablul de alimentare corect.

NOTA!

Daca apar situatii iesite din comun care nu sunt in tabelul de mai sus, sunati imediat la service-ul specializat.



Dezafectarea echipamentelor electrice si electronice vechi

(Se aplica pentru țările membre ale Uniunii Europene si pentru alte țări europene cu sisteme de colectare separate).

Acest simbol aplicat pe produs sau pe ambalajul acestuia indica faptul ca acest produs nu trebuie tratat ca pe un deșeu menajer.

El trebuie predat punctelor de reciclare a echipamentelor electrice si electronice.

Asigurandu-va ca acest produs este dezafectat in mod corect, veți ajuta la prevenirea posibilelor consecințe negative asupra mediului si a sănătății umane, care ar fi putut surveni daca produsul ar fi fost dezafectat in mod necorespunzător.

Reciclarea materialelor va ajuta la conservarea resurselor naturale.



Memo

A series of horizontal dotted lines for writing, spanning the width of the page.



Memo

A series of horizontal dotted lines for writing, spanning the width of the page.

